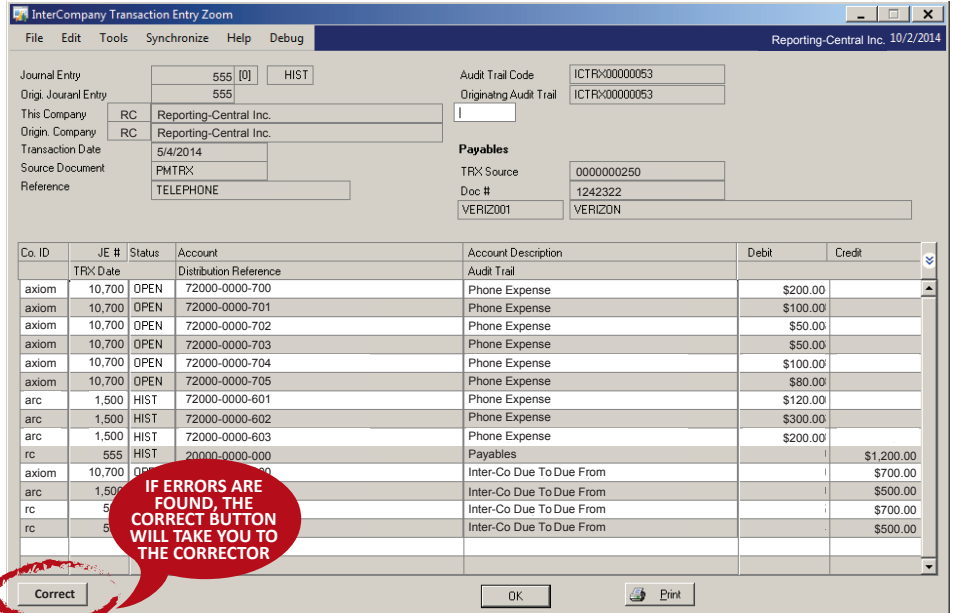




INTER-COMPANY VIEW

Once Inter-Company Payables and Journal Entries are posted, they have a bad habit of disappearing and leaving you with only the Inter-Company Due To/Due From Accounts of the Target Companies. Now with **Inter-Company View** the Source Company can see the entire Inter-Company Transaction, including its original target entries. If mistakes were made **The Corrector for AP Distributions** can resolve these Inter-Company errors with its **CORRECT** button! Your Accounts Payable staff can now answer questions about Inter-Company transactions without embarking on a research project.



IF ERRORS ARE FOUND, THE CORRECT BUTTON WILL TAKE YOU TO THE CORRECTOR

NEW INTERCOMPANY BUTTON ON TRANSACTION ENTRY ZOOM

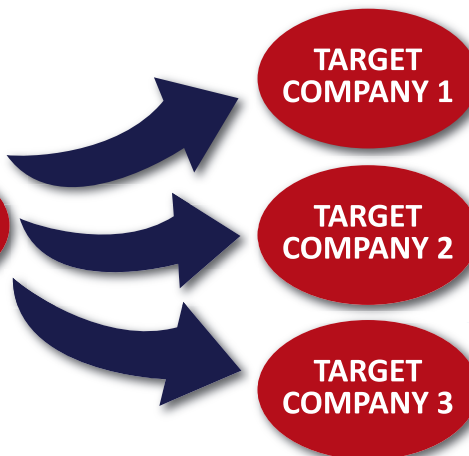
VIEW YOUR INTERCOMPANY ENTRY AS ENTERED. NO MORE DISAPPEARING ENTRIES!

INTER-COMPANY VOID

Inter-Company Due to/Due From accounts are very difficult to reconcile with the culprit often being voids. You void an Inter-Company transaction in the source company and then nothing happens with the target company. With **Inter-Company Voids** the target company's side of the inter-company entry is automatically voided if the source company side of the entry is voided. Save processing time and avoid reconciliation issues.

THE VOID OCCURS IN THE SOURCE COMPANY

SOURCE COMPANY



THE VOID WILL NOW AUTOMATICALLY OCCUR IN TARGET COMPANIES

INTER-COMPANY ALLOCATIONS

Inter-Company Fixed and Variable allocations for Accounts Payable and Journal Entry transactions. You are no longer limited to allocating within the same company.