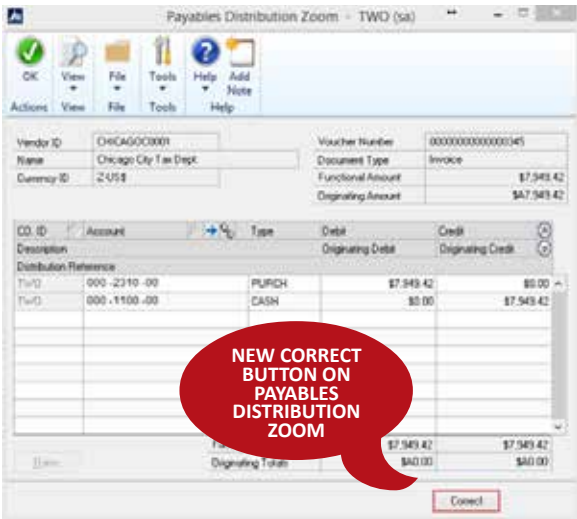
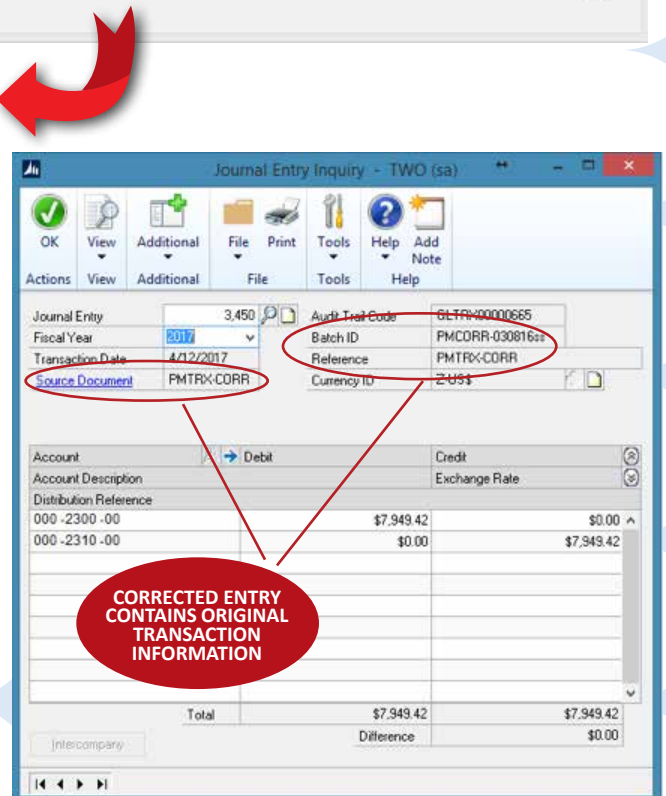
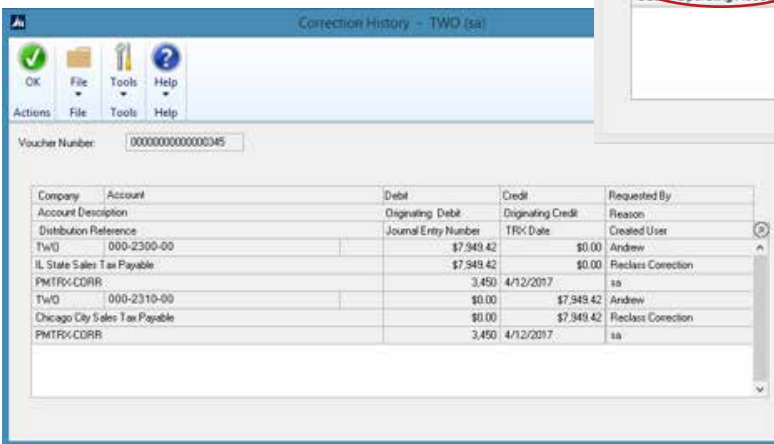
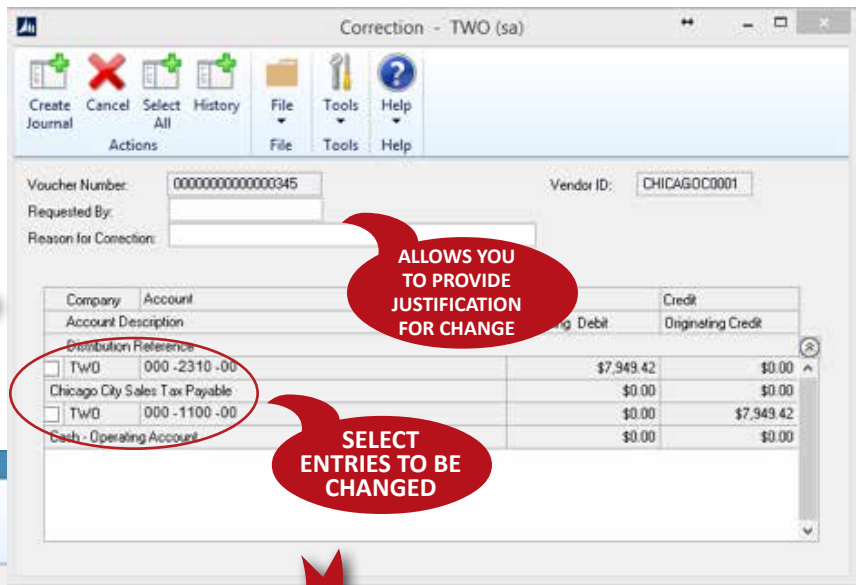




THE CORRECTOR



You love the **“CORRECT”** button on Journal Entries. Now the **“CORRECT”** button has come to Accounts Payable! The majority of issues identified by The Closer involve coding errors. In the past, the only way to correct these errors was an un-related Journal Entry with minimal information. Now, with the **The Corrector** you can select the AP Distribution lines that need attention, and automatically generate a Journal Entry that includes meaningful historic information.



Now the journal entries will contain Vendor and Document information as well as a History of why the correction was done and by whom. **No more cryptic Journal Entries in your reports!**